



For Sale:

4 Bedroom  
Detached Country House

Offers in Excess of £495,000

Foxspur

Symington  
KA1 5SH

For more information contact:

01292 288222  
office@donaldross.co.uk

[www.donaldross.co.uk](http://www.donaldross.co.uk)





# Foxspur, , Symington, KA1 5SH

A truly impressive 3 or 4 bedroom detached country house which has been built to a bespoke specification and offers spacious flexible accommodation situated within a prime location on the outskirts of Symington. In addition to this wonderful property is the option to purchase a large shed & workshop plus circa 7 acres of good grazing ground.

- Welcoming Entrance hall with feature oak staircase
- Dining Kitchen & Utility room
- Open plan Lounge, Dining room & Kitchen
- Family room/4th Bedroom
- Three large Bedrooms (2 with en-suite)
- Ground floor Shower room & First Floor Bathroom
- Double Garage with electric door
- Lot 2 Agricultural Shed 21m x 15m & Workshop 15m x 5m £100,000
- Lot 3 Circa 7 Acres of good grazing ground £50,000
- Wonderful rural location only 30 minutes from Glasgow

**Council Tax**  
Band G

**Viewing**  
Is by appointment only which can be  
arranged by contacting us on:

Tel: 01292 288222  
Email: [office@donaldross.co.uk](mailto:office@donaldross.co.uk)

Mon to Fri: 9am – 5:30pm  
Sat: 10am – 5pm  
Sun: 1pm – 5pm

Offers in Excess of £495,000







A light-colored wooden dining table with a thick top and four legs, surrounded by six black leather chairs with high backs and wooden legs.

A light-colored, patterned curtain tied back, hanging from a dark metal rod next to the glass doors.







White upper wall cabinets with a glass-fronted cabinet on the left containing glassware. The cabinets have silver handles and are set against a white wall with a recessed lighting strip below.

A light-colored wooden door with a glass insert, set in a wooden frame. A small framed picture hangs above the door.

A tall, black, double-door refrigerator with a water and ice dispenser on the left door, integrated into the white cabinetry.

White lower wall cabinets with two drawers and a cabinet door, featuring silver handles and a dark marble countertop above.

A built-in oven with a stainless steel finish and a black glass door, integrated into the white cabinetry. A control panel is visible above the door.

White lower wall cabinets with two drawers and a cabinet door, featuring silver handles and a dark marble countertop above. A knife block and a utensil holder are on the counter.

A flat-screen television is placed on the dark marble countertop, displaying a scene of a blue sofa in a living room.

White lower wall cabinets with two cabinet doors, featuring silver handles and a dark marble countertop above.

A light-colored wood-look laminate floor with a natural wood grain pattern, covering the entire kitchen area.













DREAM BIG  
little one!

















Pond



**LOT 3**  
Circa 7 Acres



**LOT 2**

EXYSPUR

Path

B751

B751

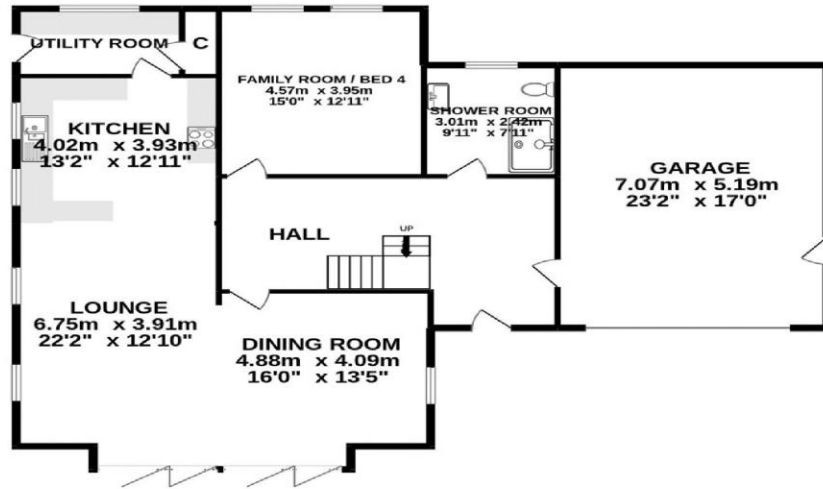
58.8m

Path

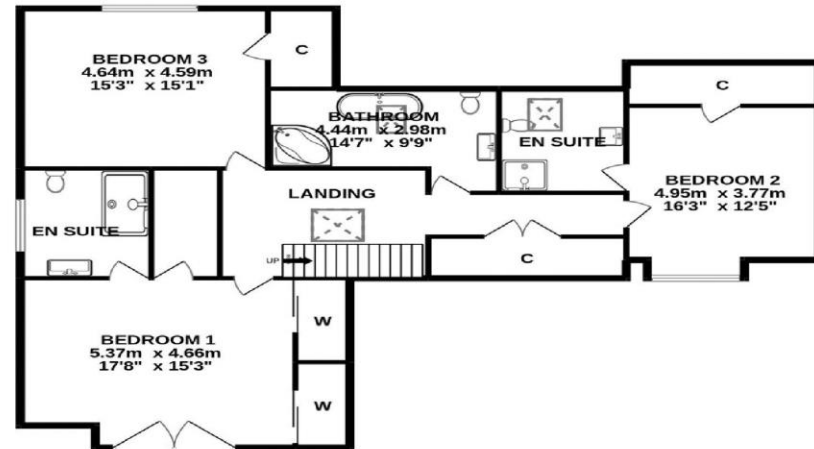


# Gross Internal Floor Size 0 m<sup>2</sup>

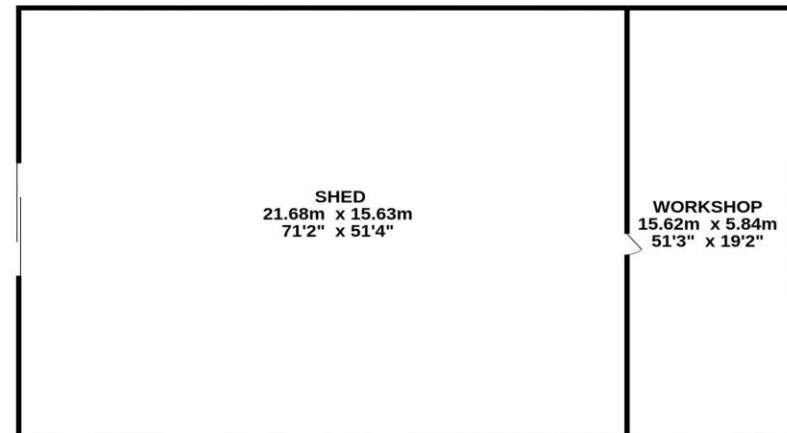
GROUND FLOOR



1ST FLOOR



OUTBUILDING



ALL SIZES TAKEN AT WIDEST POINTS

Whilst every attempt has been made to ensure the accuracy of the floorplan contained here, measurements of doors, windows, rooms and any other items are approximate and no responsibility is taken for any error, omission or mis-statement. This plan is for illustrative purposes only and should be used as such by any prospective purchaser. The services, systems and appliances shown have not been tested and no guarantee as to their operability or efficiency can be given.  
Made with Metropix ©2022

Donald Ross Residential, unlike most estate agents who are part of a franchise group or PLC, are privately owned and completely independent. Independence allows us to offer our clients a genuinely personal service geared solely towards the very best advice and assistance when selling your home. Donald Ross Residential was formed in 1985 and is one of Ayrshire's longest established estate agents. With a highly qualified and experienced team, Donald Ross Residential is the Estate Agent of choice when you are considering buying or selling your home. Donald Ross Residential is proud to be members of The Property Ombudsman for Estate Agents.

We have done everything possible to ensure that the details included in this property schedule were correct at the time of going to print. Donald Ross will not be held liable for errors or omissions in this property schedule. We recommend that all home buyers view the home report before committing to purchase a property. ©2009 Donald Ross. All rights reserved.



1 Beresford Terrace, Ayr KA7 2ER  
Tel: 01292 288222  
Email: [office@donaldross.co.uk](mailto:office@donaldross.co.uk)  
[www.donaldross.co.uk](http://www.donaldross.co.uk)

Donald Ross Estate Agents Limited,  
Registered in Scotland No.SC290184  
Directors: Jacqueline Miller, Fraser Stewart.

[www.donaldross.co.uk](http://www.donaldross.co.uk)

